



# Heights Libraries – Noble Neighborhood Branch

8 September 2021



# Agenda

- **Context + Existing Site**
- **Planning Concepts**
- **Community Input**



# Agenda

- **Context + Existing Site**
- Planning Concepts
- Community Input



# Context and Due Diligence



- Civic Life - a Place for People
- Attractive, Enticing, Vital
- Serve all Ages
- Meeting, Voting, Learning, Celebrating, Growing

## NOBLE ROAD PRESBYTERIAN CHURCH FACILITY CONDITION ASSESSMENT



Prepared for



REV 0

February 8, 2021

PREPARED BY:



3121 Bridge street  
CLEVELAND, OHIO 44113  
TEL: (855) 866-4526



# Context and Due Diligence

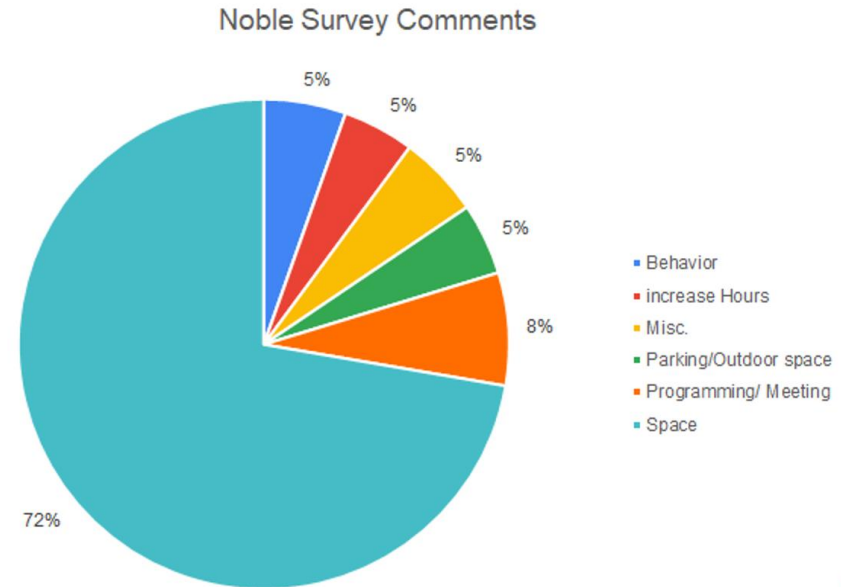
## Noble Branch Survey Results



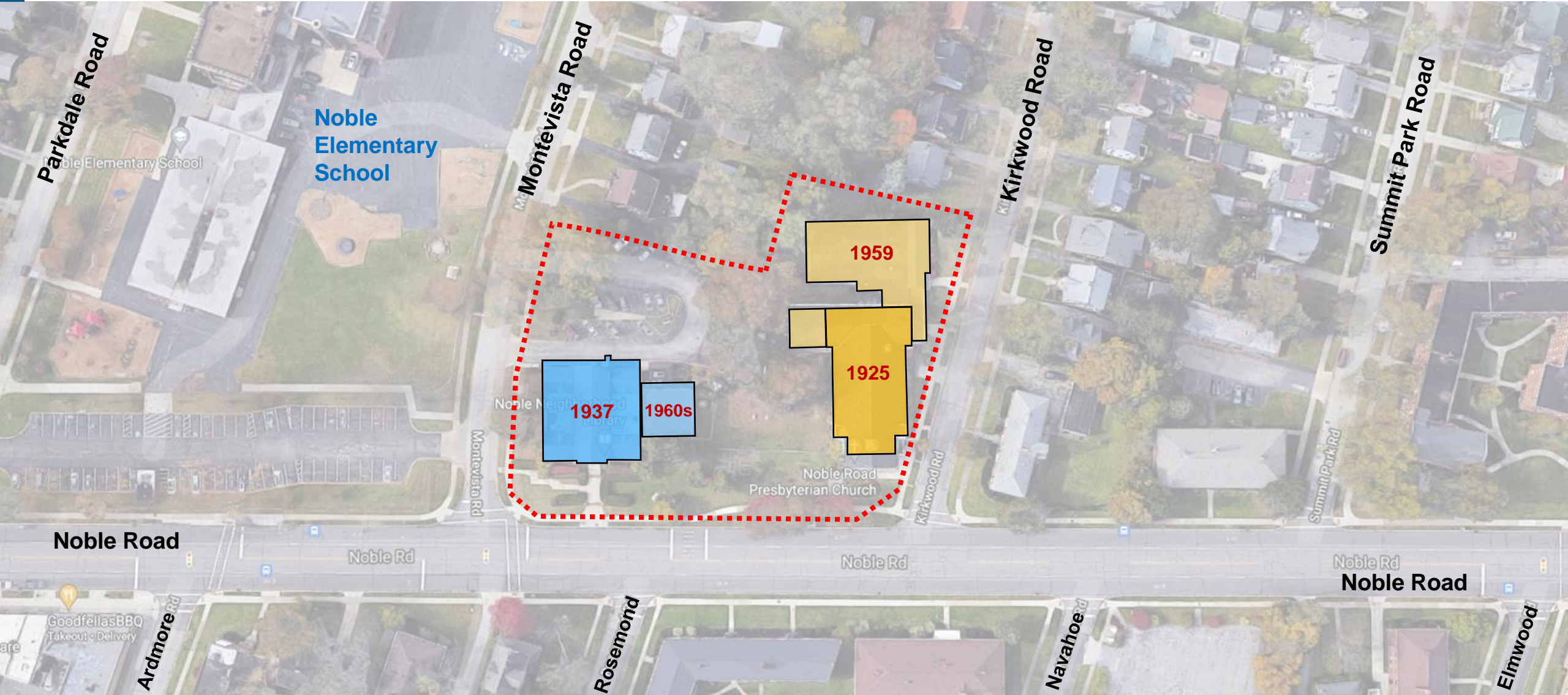
Winter 2021



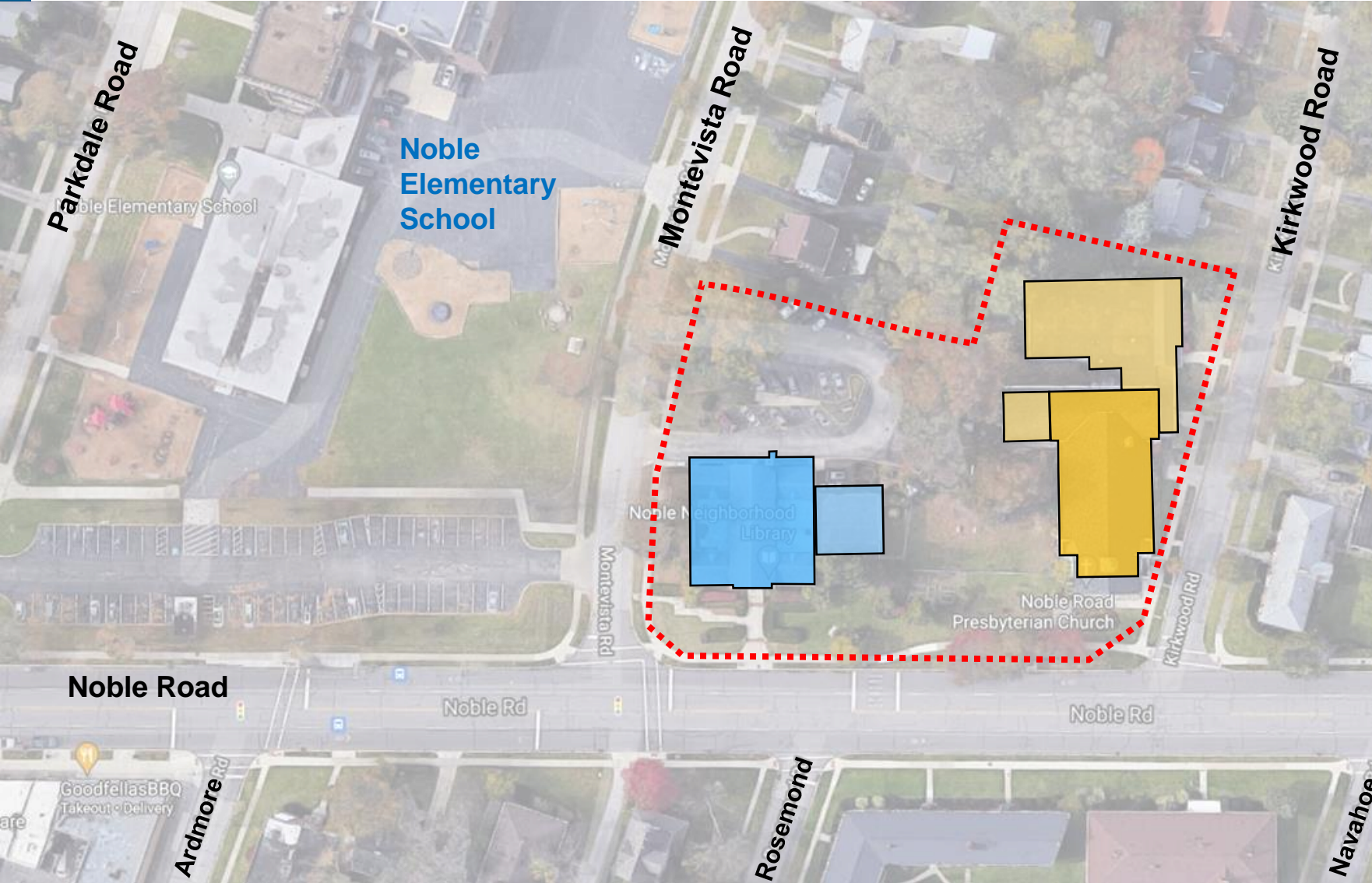
## Responses indicate we need more space



# Site Analysis



# Site Analysis



## Noble Branch Library

2011 Full Renovation

1937 Original Library SF = 10,900

1960s Expansion SF = 1,470

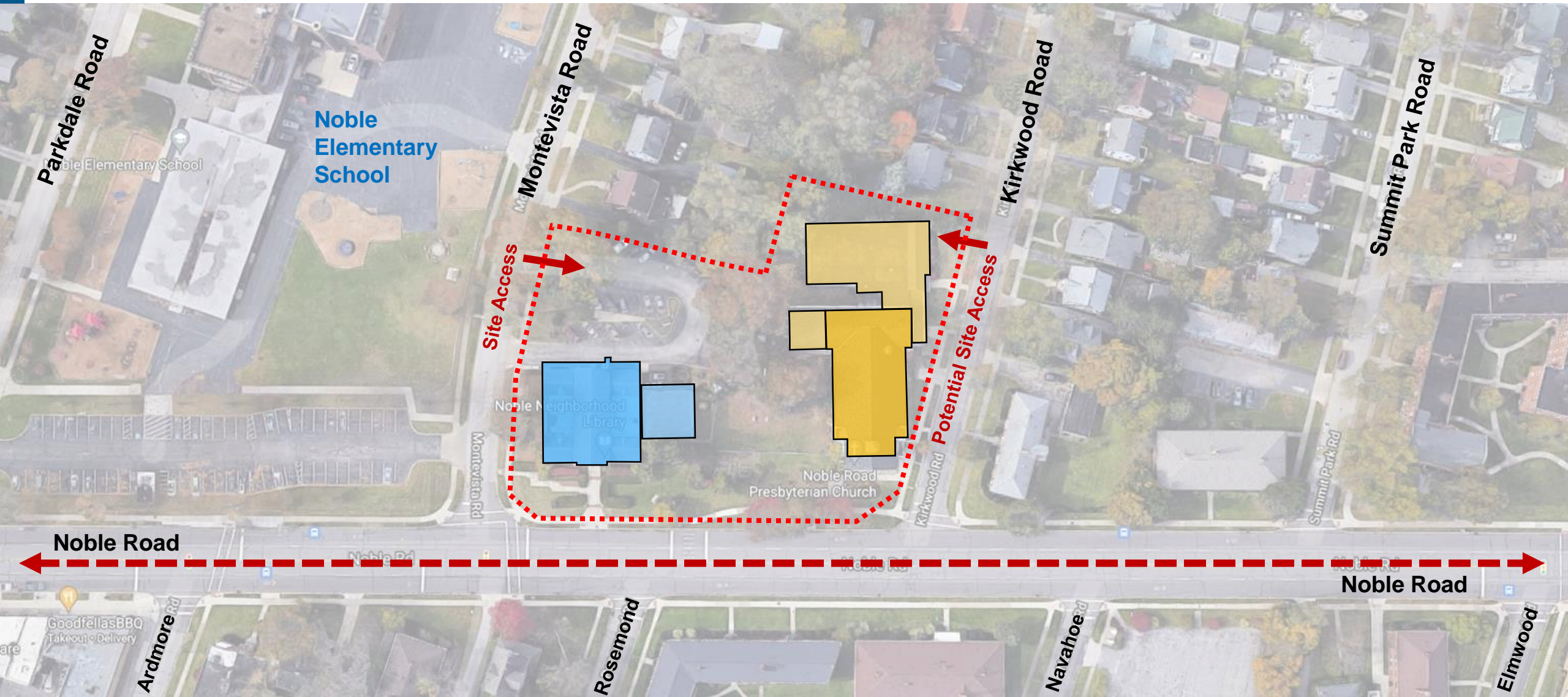
**Total SF 12,370**

0.77 Acre Site

27 on-site parking spaces

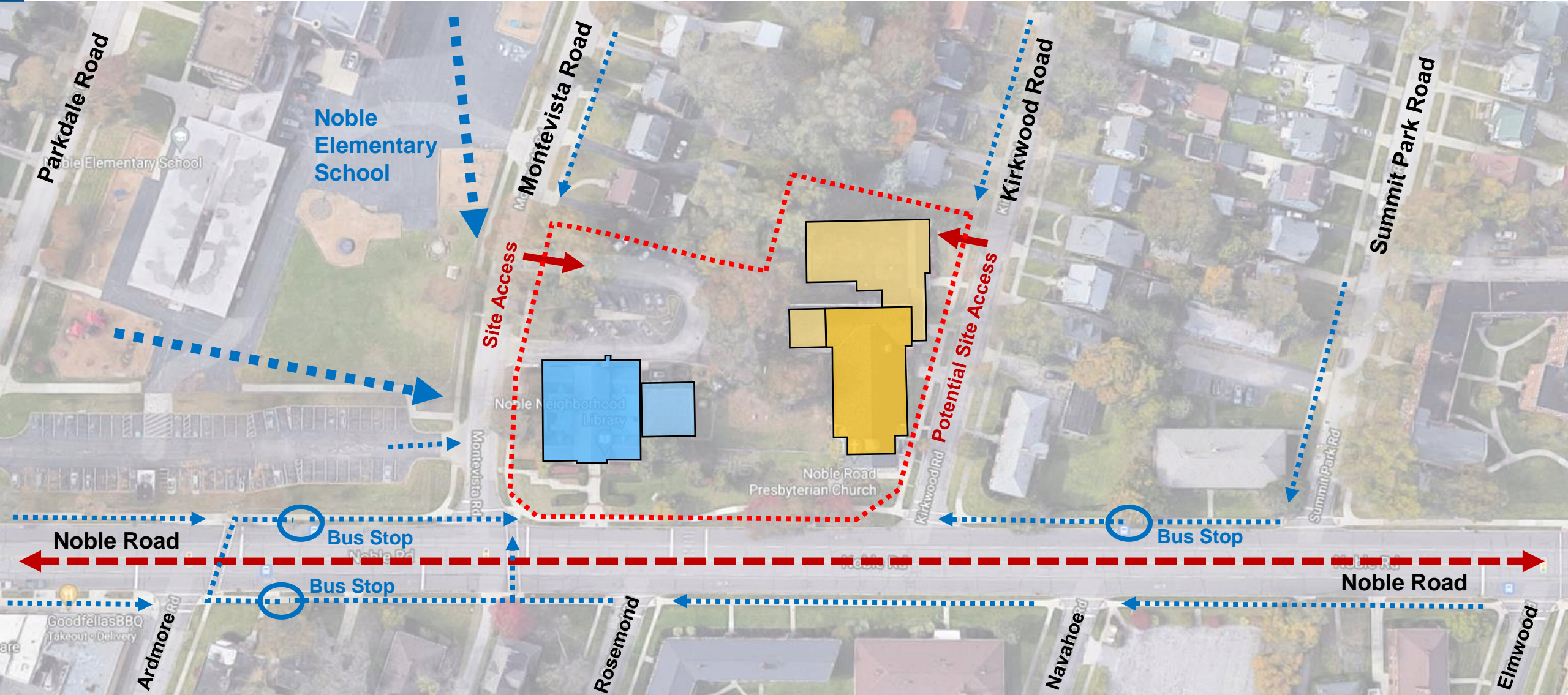


# Site Analysis





# Site Analysis



# Site Analysis

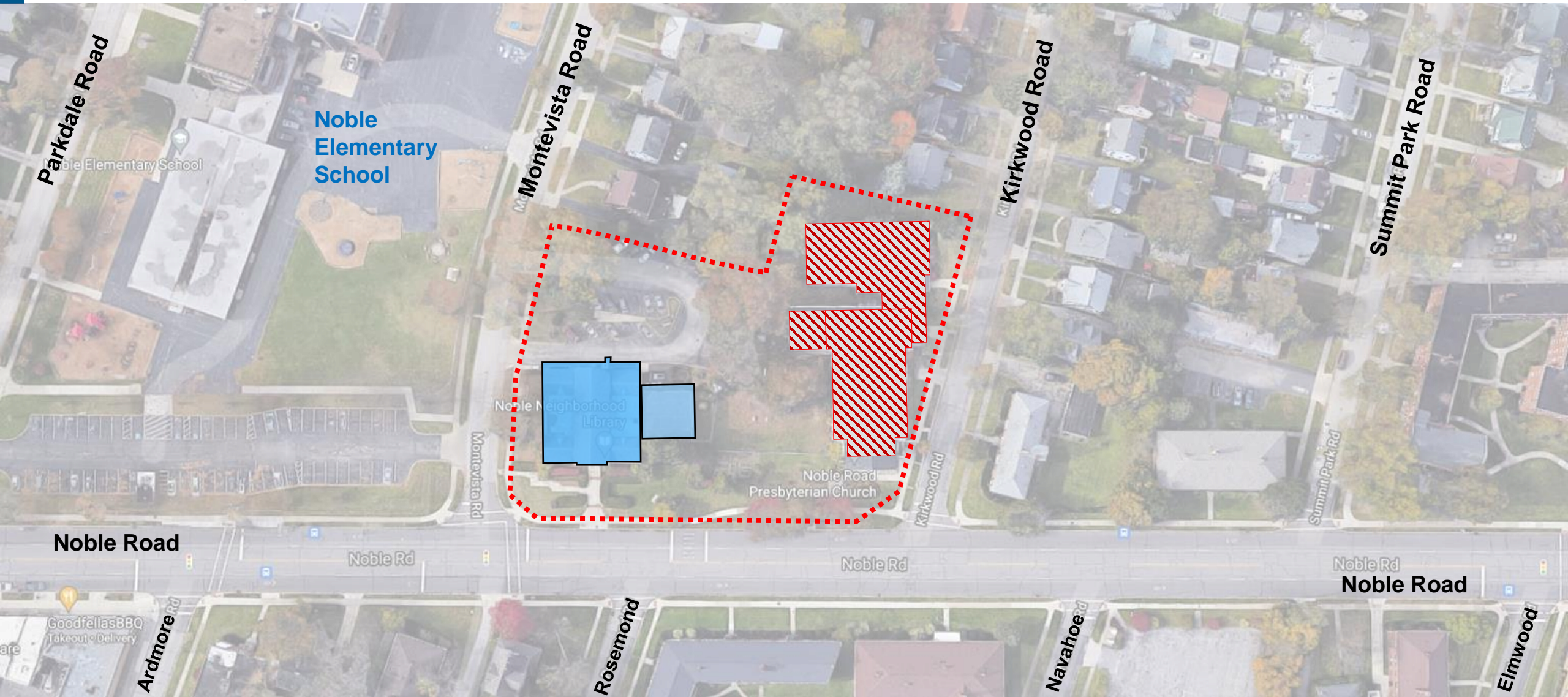


# Agenda

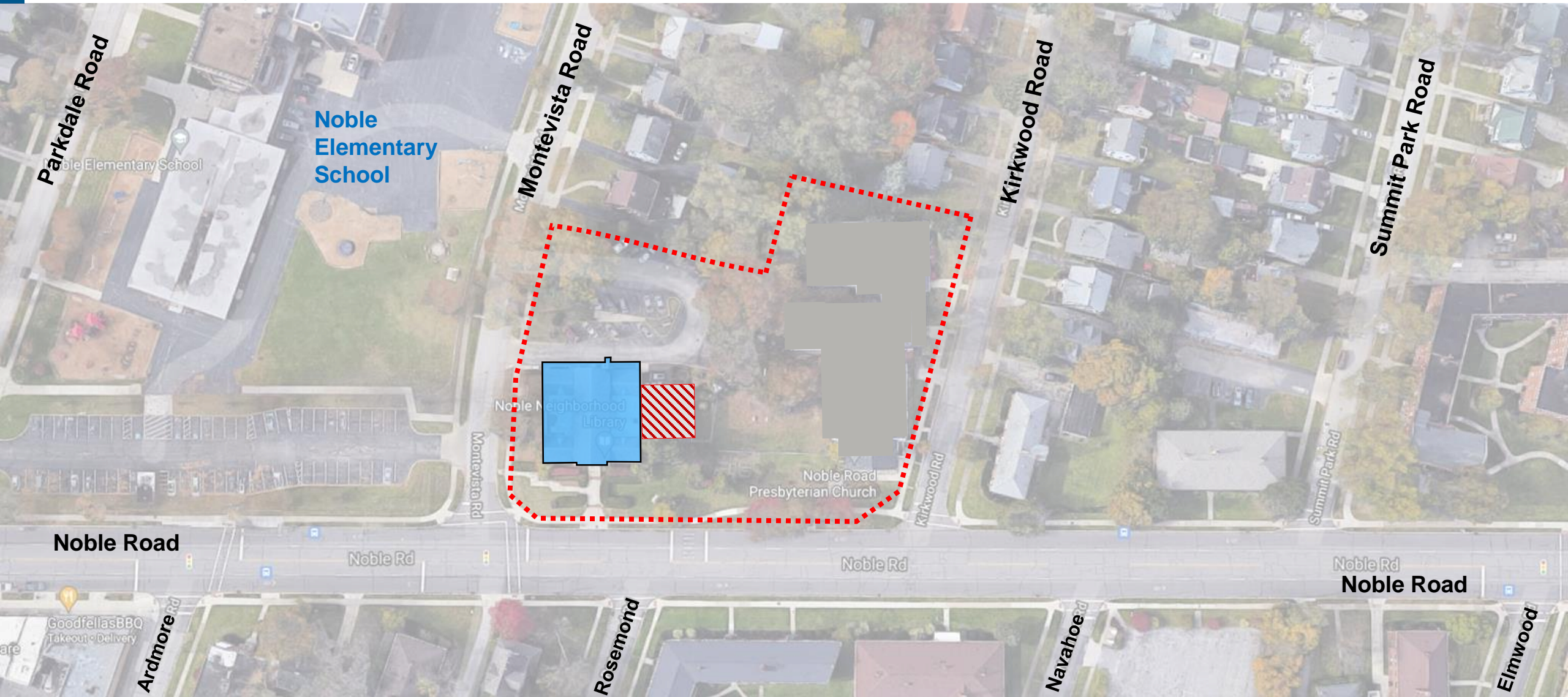
- Context + Existing Site
- **Planning Concepts**
- Community Input



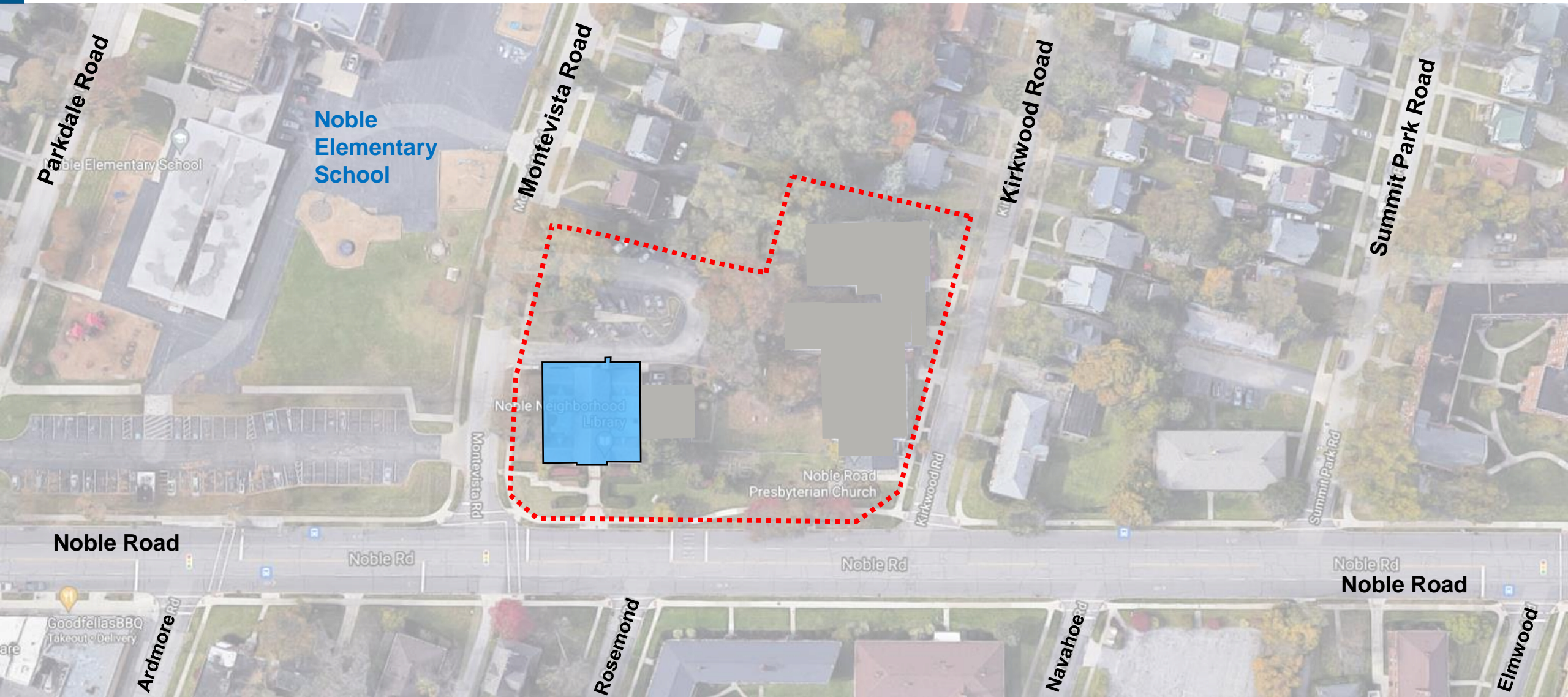
# Site Analysis



# Site Analysis



# Site Analysis

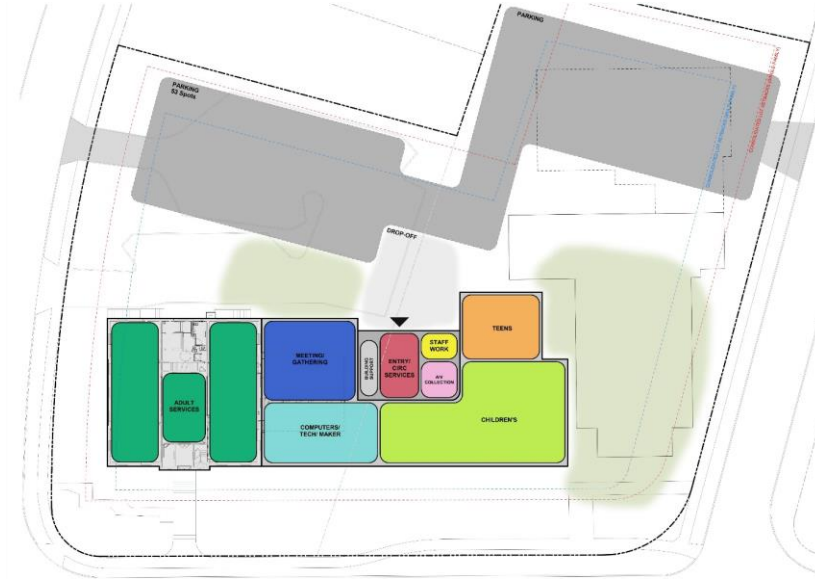


# Original Options

18 June 2021



A



B



C

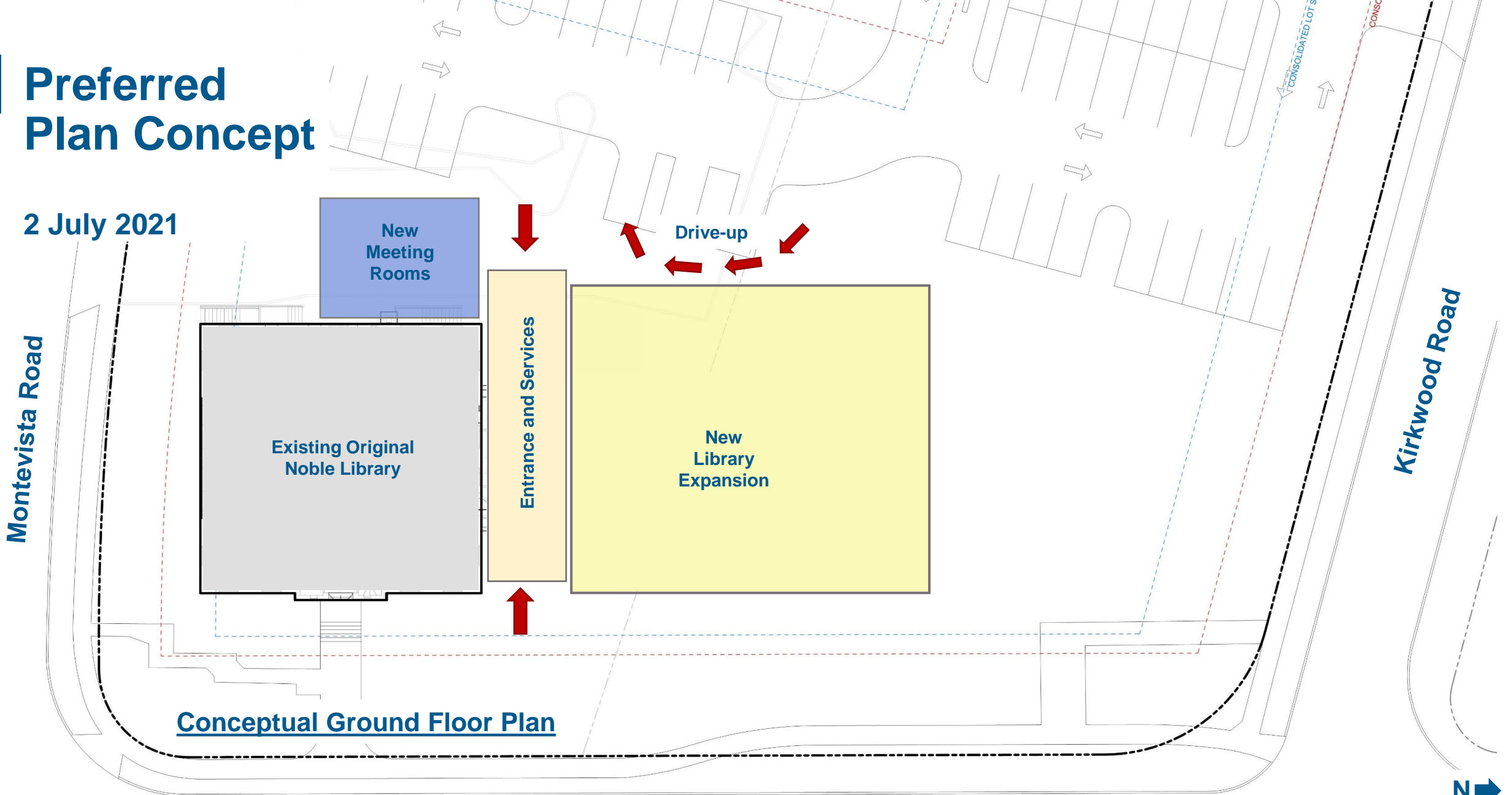


D



# Preferred Plan Concept

2 July 2021



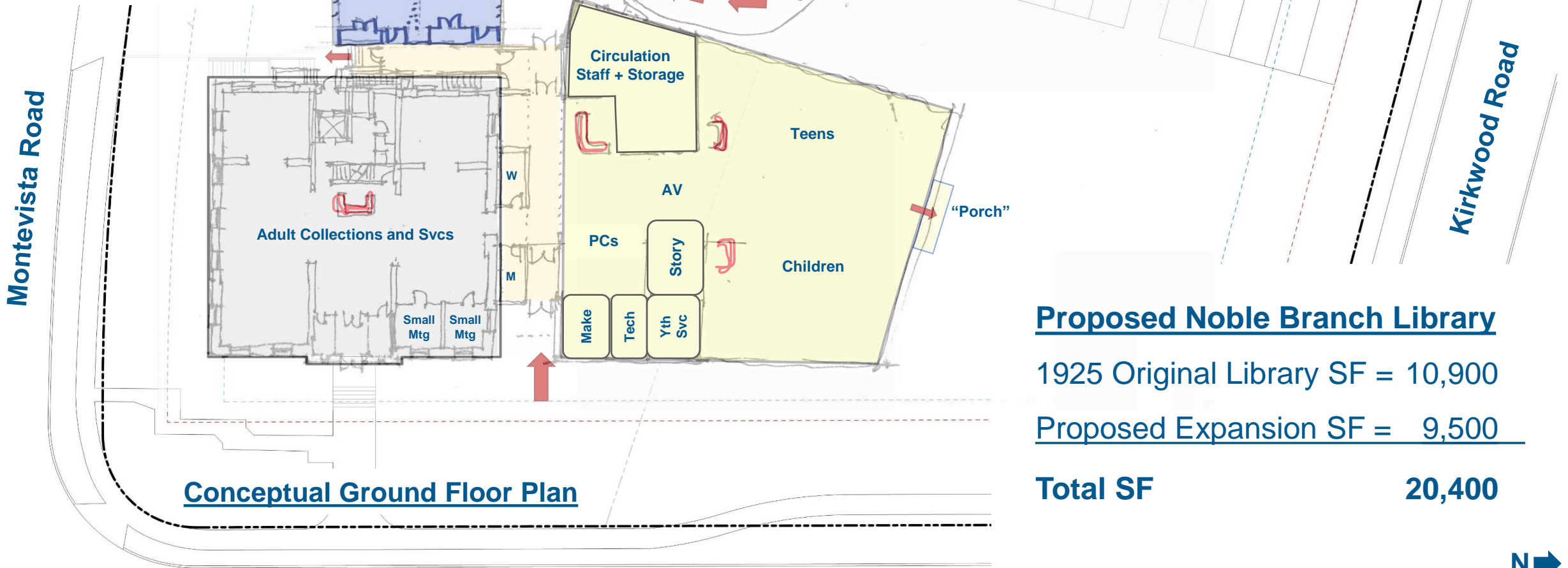
Conceptual Ground Floor Plan





# Plan Refinement

22 July 2021



## Proposed Noble Branch Library

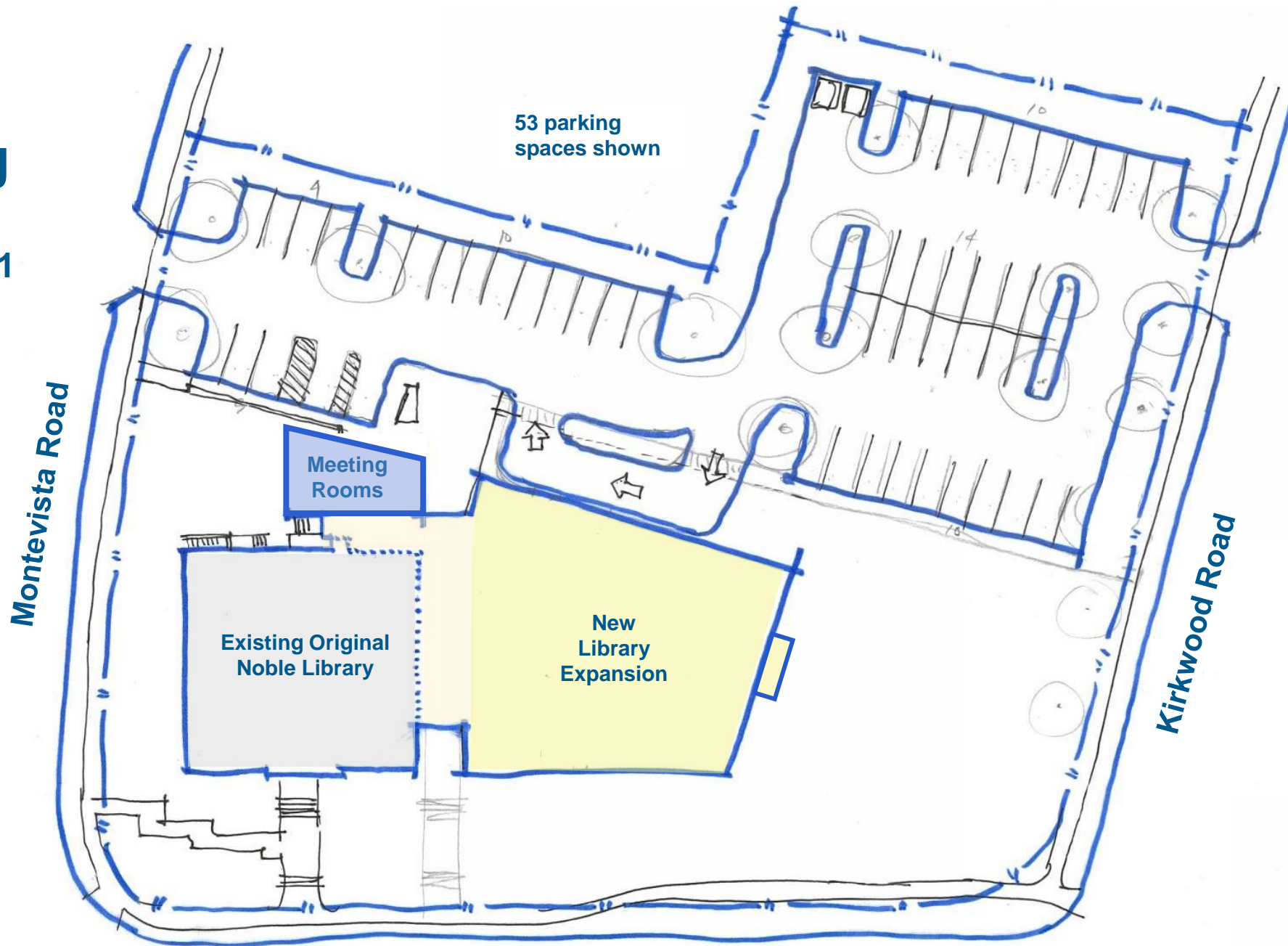
1925 Original Library SF = 10,900

Proposed Expansion SF = 9,500

**Total SF 20,400**

# Site + Parking

22 July 2021

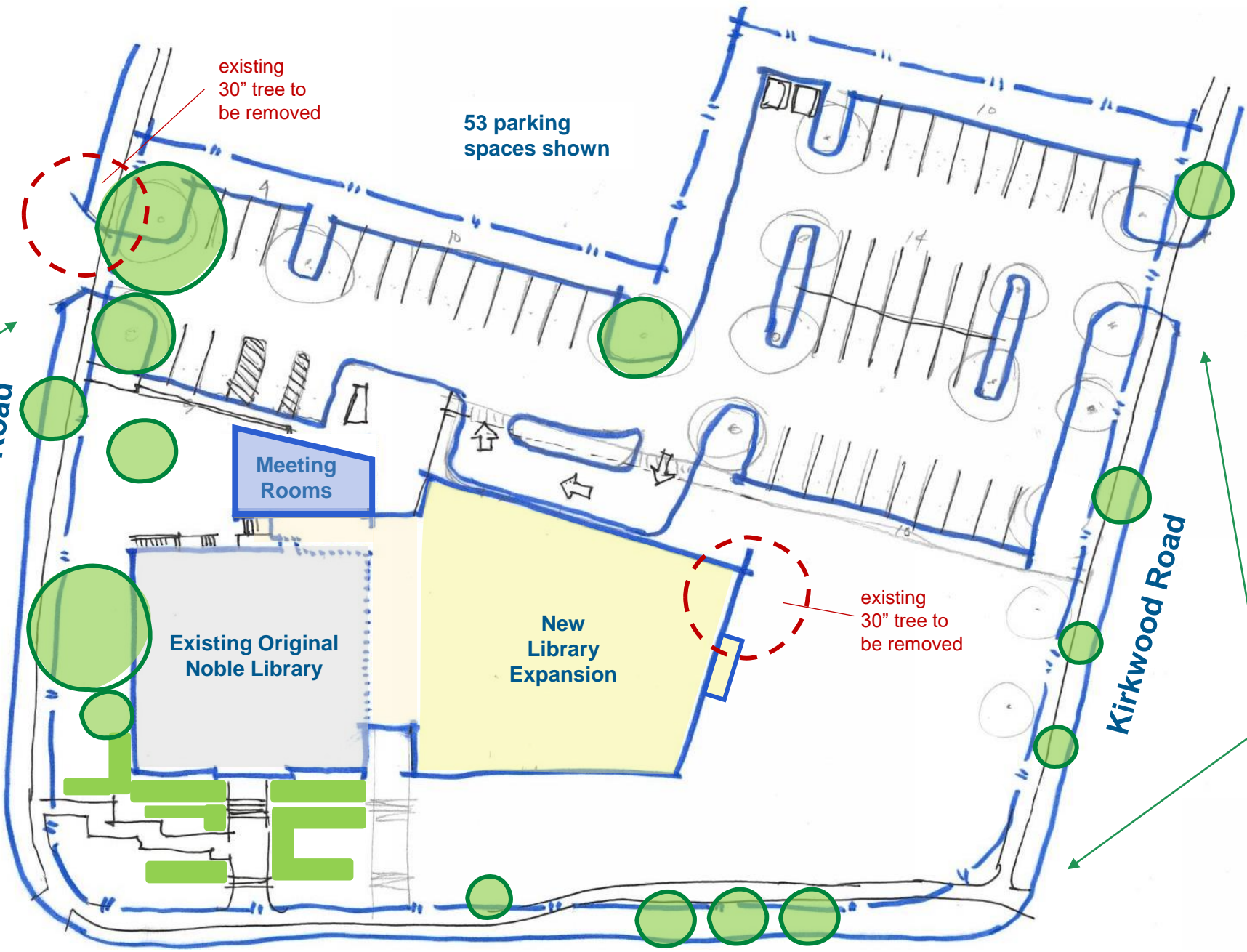


# Site + Parking

22 July 2021

Existing Trees and Landscaping

Montevista Road



existing 30" tree to be removed

53 parking spaces shown

Meeting Rooms

Existing Original Noble Library

New Library Expansion

existing 30" tree to be removed

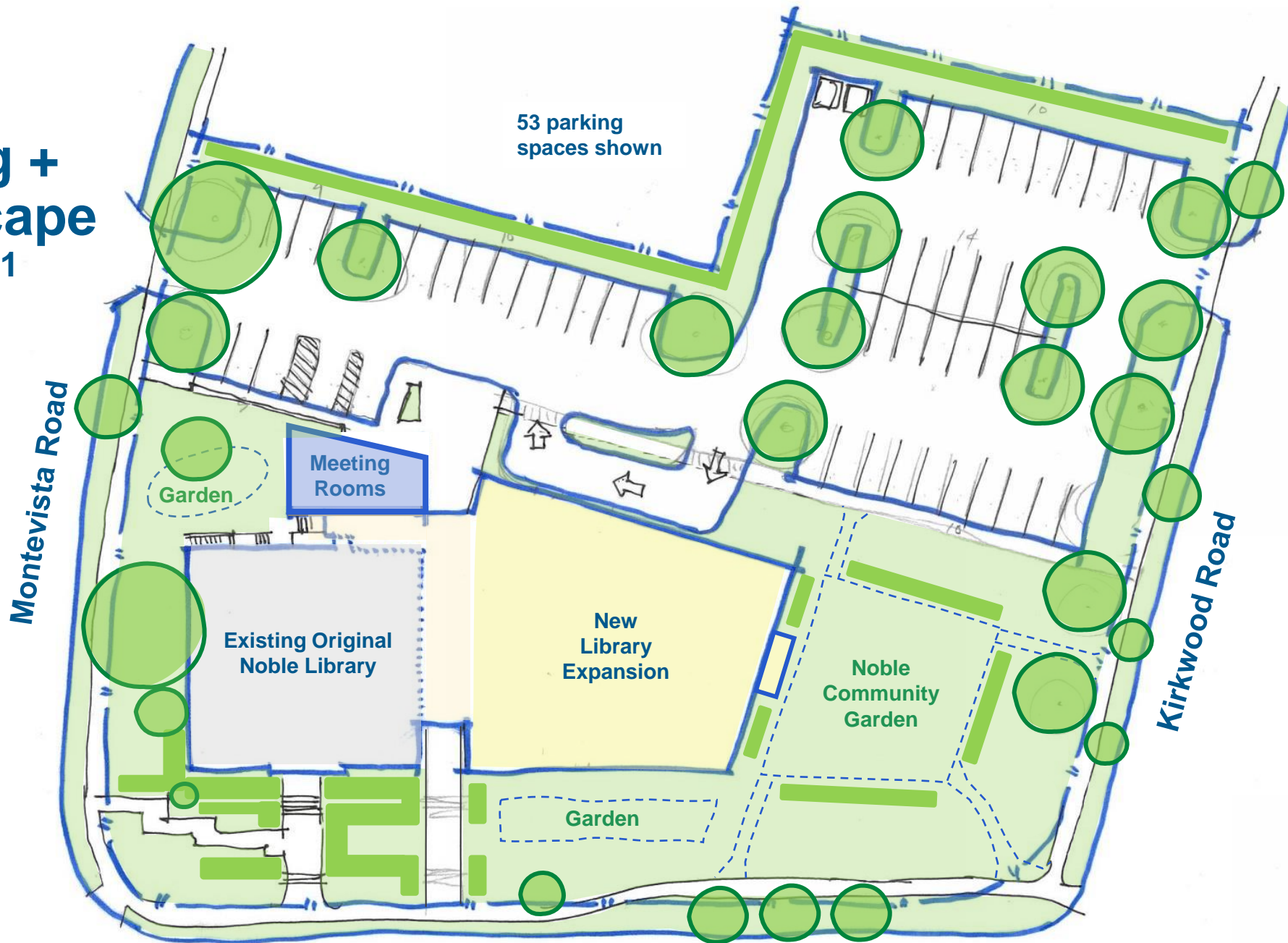
Kirkwood Road

Existing Trees and Landscaping



# Site + Parking + Landscape

22 July 2021



# Site + Parking + Landscape

22 July 2021



# Agenda

- Context + Existing Site
- Planning Concepts
- **Community Input**



# Community Input

Groups of images focused on:

Spaces for Adults

Spaces for Children and Teens

Spaces for Meeting, Making, and Collaboration

Exterior Design

Outdoor Spaces

Each group has a facilitator to **help spark dialogue** and **answer questions**

Move from group to group - **OR** - focus on the area most important to you

Images are **NOT RECOMMENDATIONS** they are conversation starters.

Most of all: **WE WANT YOUR FEEDBACK!**





# Heights Libraries – Noble Neighborhood Branch

8 September 2021

